
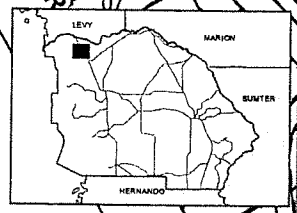
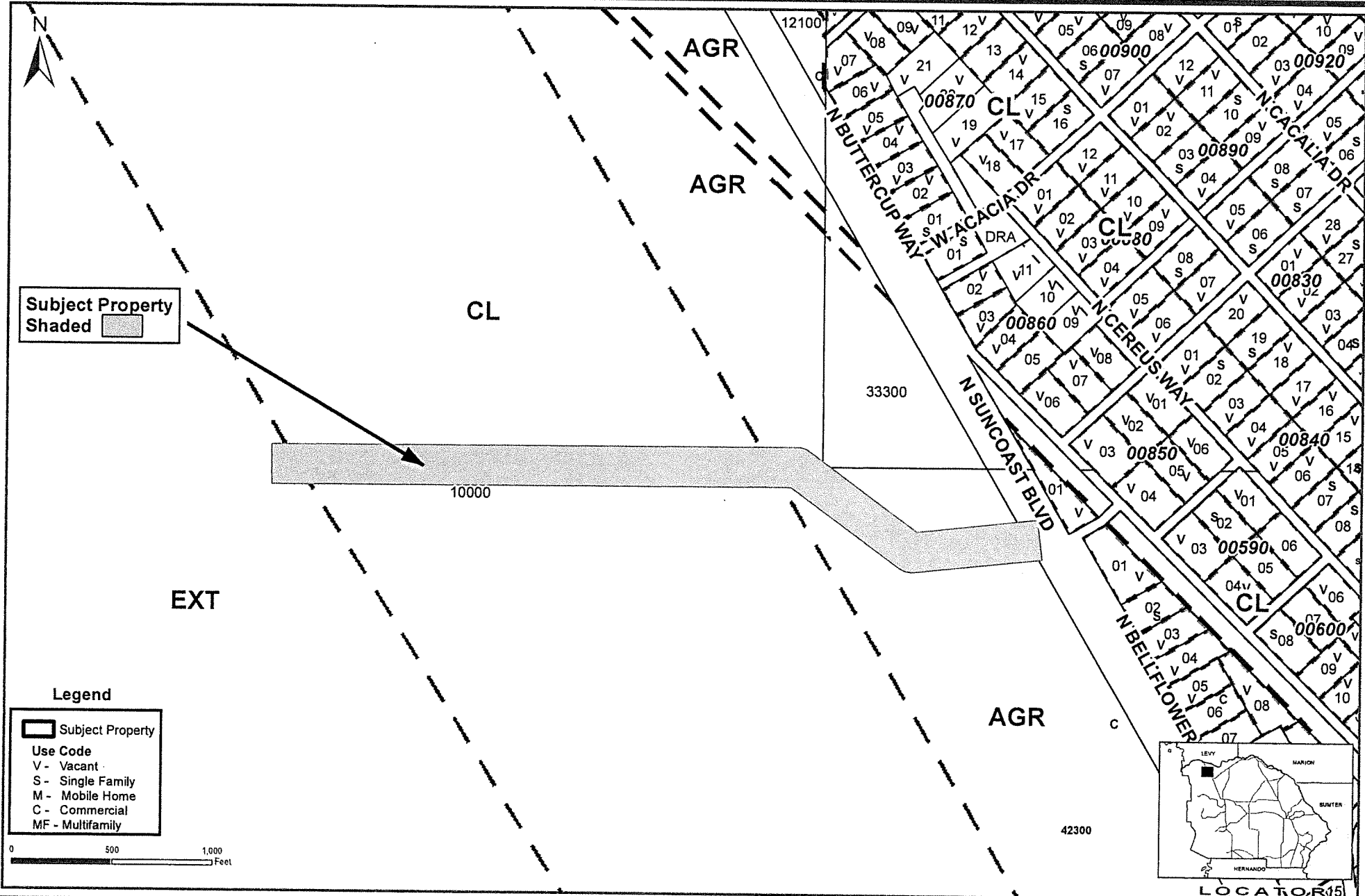
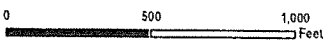




Subject Property  
Shaded 

Legend  
 Subject Property  
Use Code  
V - Vacant  
S - Single Family  
M - Mobile Home  
C - Commercial  
MF - Multifamily



Application #: CPA/AA/PUD-20-04

Applicant: Crystal River Solar 2 LLC for Holcim (US) Inc.

Proposal: Access for Power Generation Facility

Location: 8972 N. Suncoast Blvd, Crystal River, FL

Future Land Use: Multiple Designations

S-T-R - 23,24-17S-16E

Planner Initials: *W* Date: 2/26/20

Geographic Information Systems

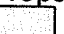
Prepared By: William Braunsch  
Date: February 12, 2020  
Source: Enterprise Geodatabase  
Map Number: WB0000161


Cynthia P. Skehron  
Director

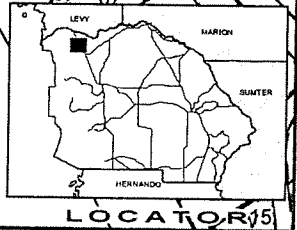
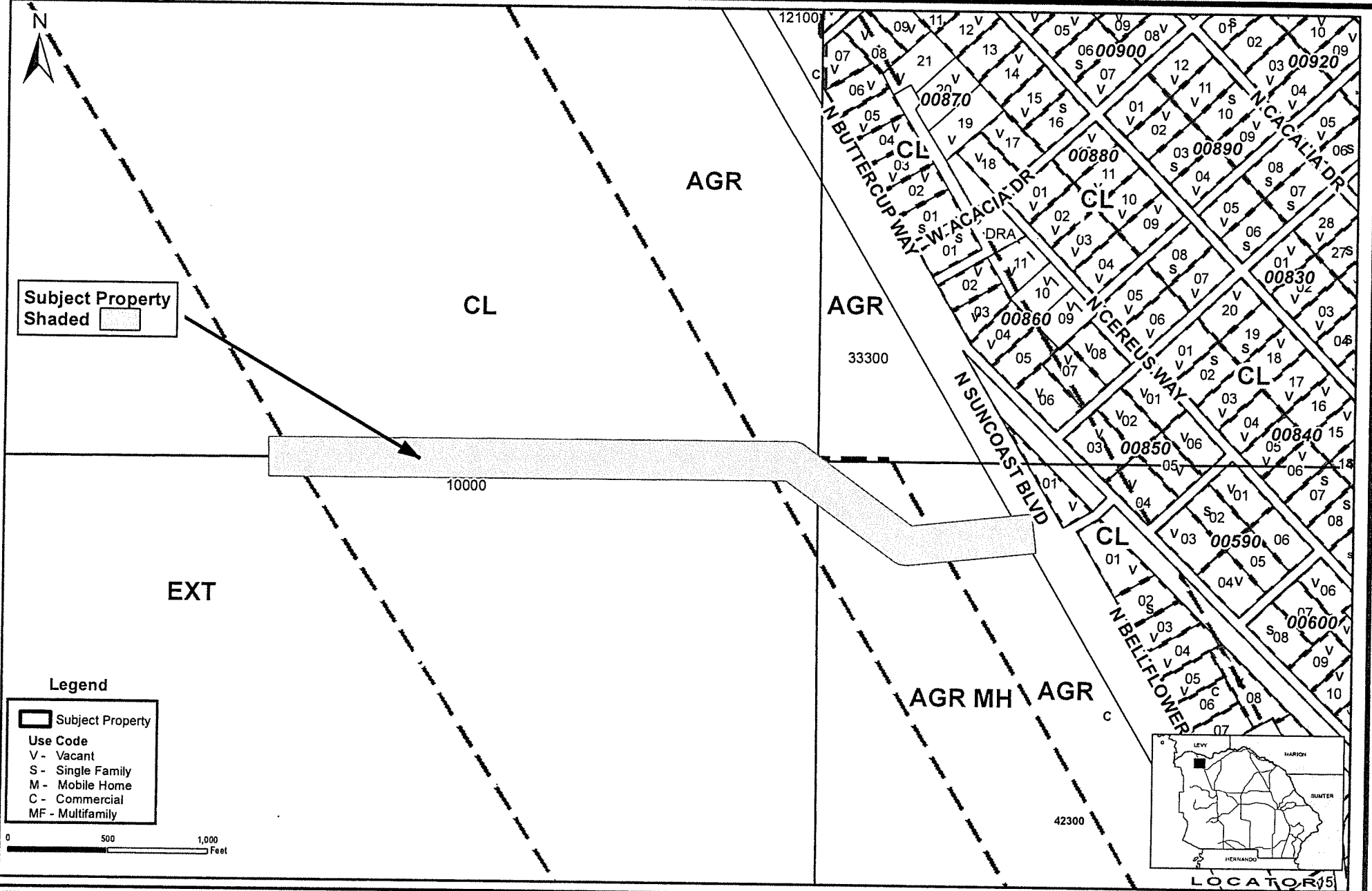
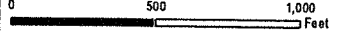


This information is to be used for general purposes only. The Marion County Geographic Information System Database makes every effort to provide correct data to the best of its ability. However, all information provided must be independently verified by the user. Marion County shall not be liable for any errors, omissions, or losses of any kind in connection with the use of this information, including but not limited to, damages or losses caused by reliance upon the accuracy or timeliness of this information and the timely copying or distribution of these materials.



Subject Property  
Shaded 

- Legend**
-  Subject Property
  - Use Code
  - V - Vacant
  - S - Single Family
  - M - Mobile Home
  - C - Commercial
  - MF - Multifamily



Application #: CPA/AA/PUD-20-04	Applicant: Crystal River Solar 2 LLC for Holcim (US) Inc.
Proposal: Access for Power Generation Facility	Location: 8972 N. Suncoast Blvd, Crystal River, FL
Future Land Use: Multiple Designations	S-T-R - 23,24-17S-16E

Planner Initials: *W* Date: *2/26/20*

**Geographic Information Systems**

Prepared By : William Braunsch  
Date: February 12, 2020  
Source: Enterprise Geodatabase  
Map Number: WB0000157

Cynthia P. Skelhorn  
Director

This information is to be used for general purposes only. The Citrus County Geographic Information System's (GIS) data is provided as a public service and is not intended to be used for any other purpose. Citrus County shall not be liable for any claims, damages, or losses of any kind in connection with the use of this information, including but not limited to, damages or losses caused by reliance upon the accuracy or timeliness of this information and the copying, reusing, or distribution of this material.

