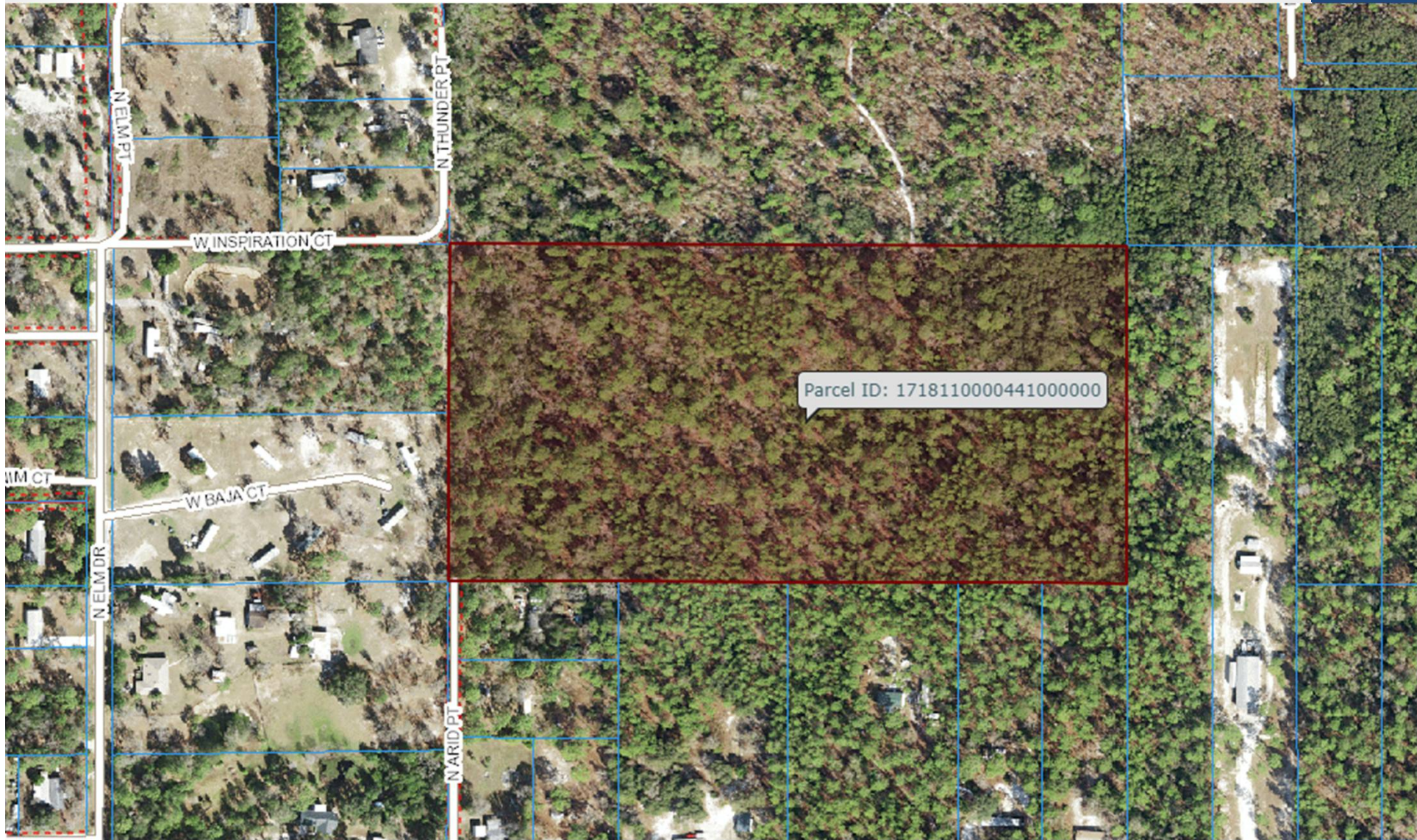


CU-21-01

Jim Penna for  
James Housh







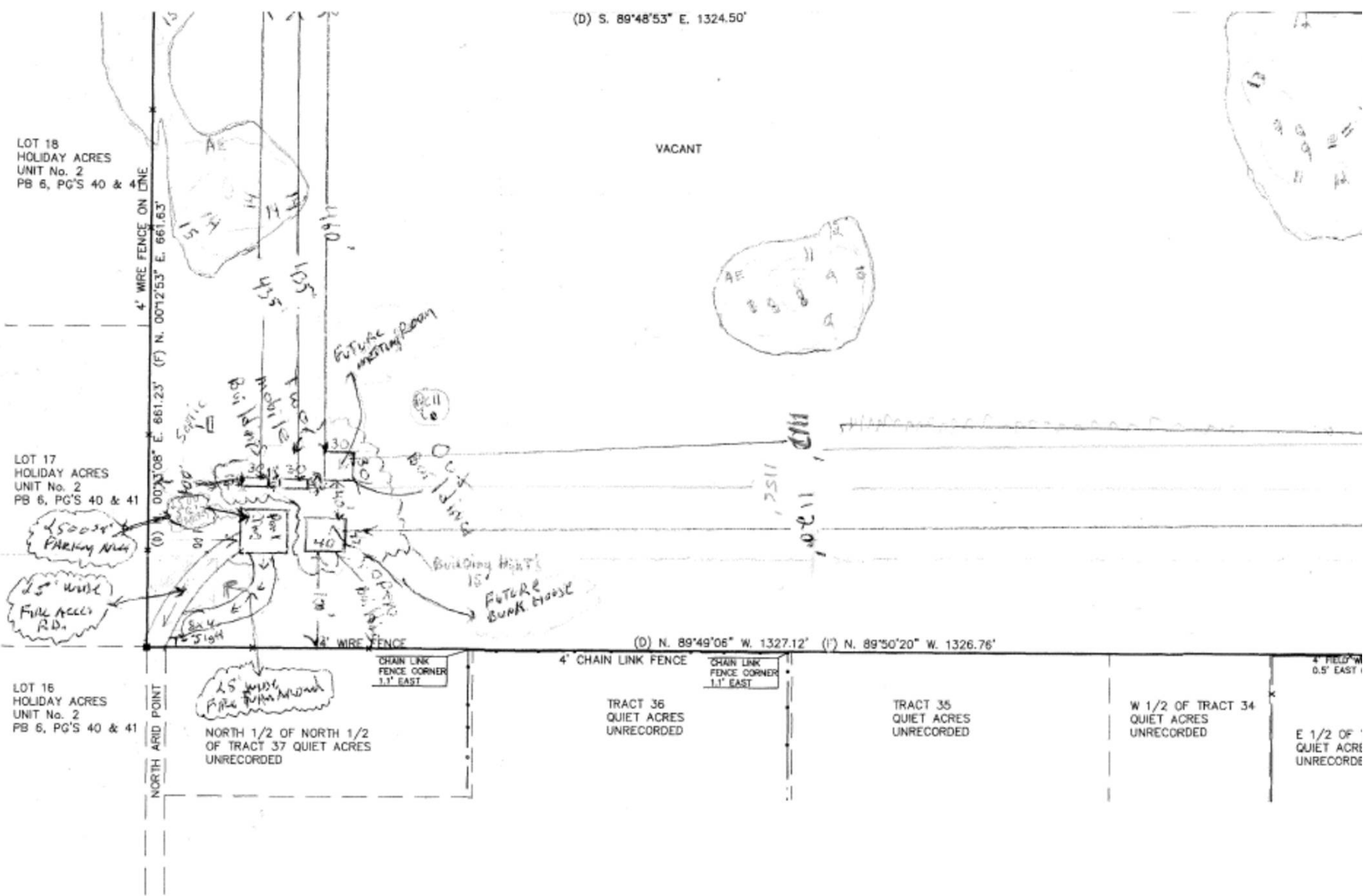
(D) S. 89°48'53" E. 1324.50'

LOT 18  
HOLIDAY ACRES  
UNIT No. 2  
PB 6, PG'S 40 & 41

LOT 17  
HOLIDAY ACRES  
UNIT No. 2  
PB 6, PG'S 40 & 41

LOT 16  
HOLIDAY ACRES  
UNIT No. 2  
PB 6, PG'S 40 & 41

VACANT



(D) N. 89°49'06" W. 1327.12' (I) N. 89°50'20" W. 1326.76'

SHOWN HEREON ARE BASED ON THE NORTH N 11, TOWNSHIP 18 SOUTH, RANGE 17 EAST '48'53" E.

LEGAL DESCRIPTION AS RECORDED IN OFFICIAL RECORDS BOOK 2063 PAGE 27 OF THE PUBLIC RECORDS OF CITRUS COUNTY, FLORIDA. NORTH 1/2 OF NORTHWEST 1/4 OF NORTHWEST 1/4 OF SECTION 11, TOWNSHIP 18 SOUTH,

THIS SURVEY IS CERTIFIED TO	
JOB No. 19-140	STEVE CUMMINS
PROJ. No.	
DRAW BY: PLH	Anderson Specialty S