

Universal Collection ITB

April 27, 2021

Presentation Outline

Schedule Update

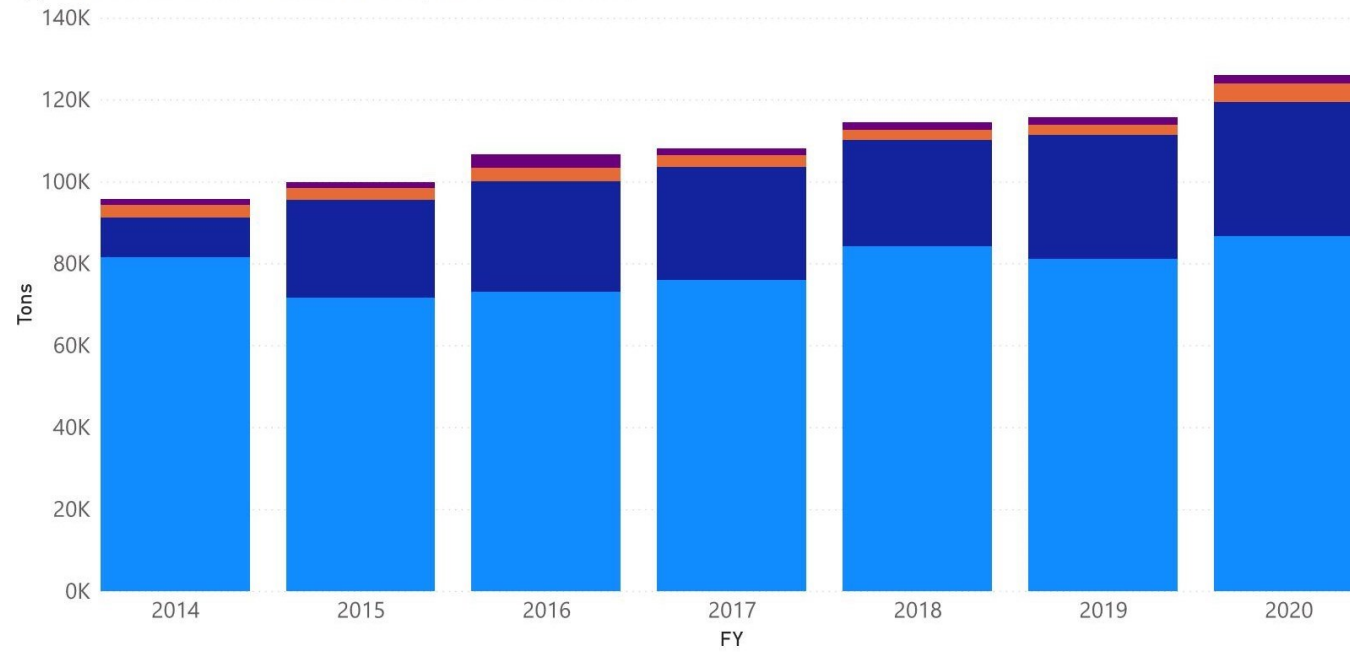
Meeting with Haulers
Summary

Invitation to Bid Summary

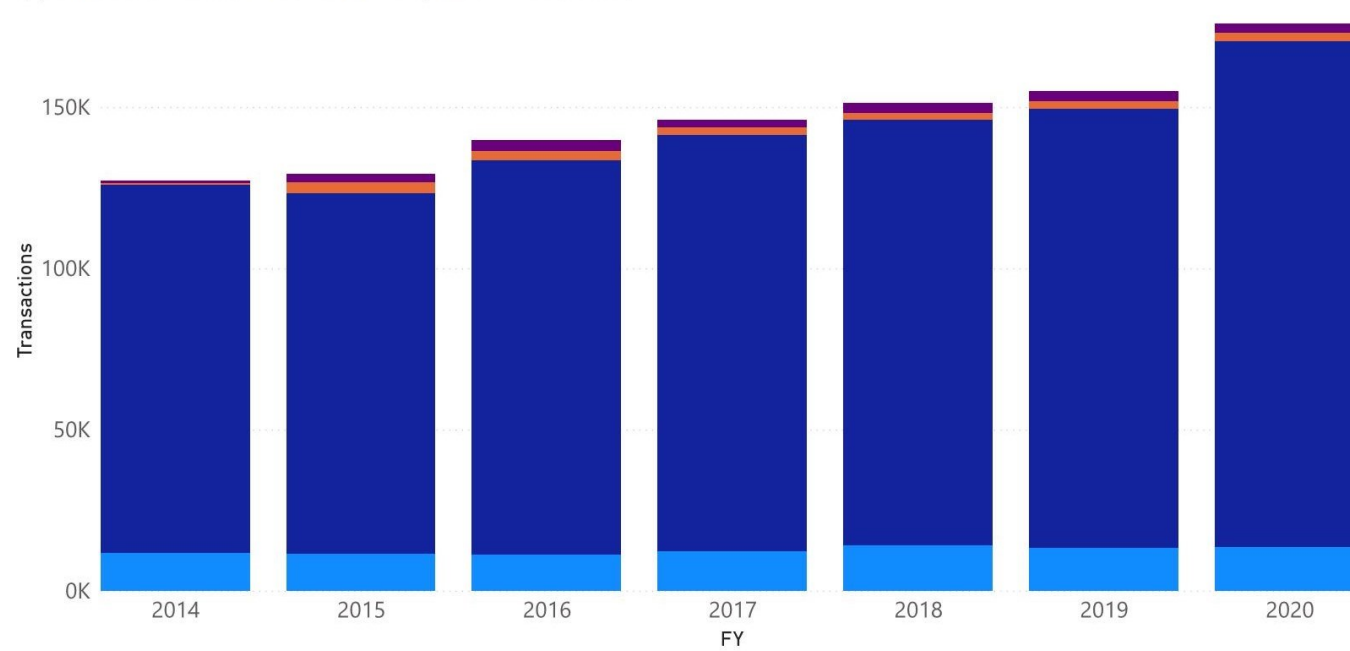
Description	Months	Begins	Ends
Board Decides to Consider Franchise Solid Waste Collection			January 2019
Notice Current Haulers	3	January 2019	March 2019
Board Held a Public Hearing			March 2019
First Solid Waste Franchising Workshop			June 2019
Second Solid Waste Franchising Workshop			January 2020
BOCC Meeting to Obtain Board Direction on Franchising Approval			February 2020
Define Service Areas, Perform Disposal Rate Analysis, & Prepare ITB	14	February 2020	April 2021
BOCC Meeting to Present Bid Documents to the Board			May 2021
Issues Invitation to Bid			July 2021
Receive, Evaluate, and Recommend Award	3	August 2021	October 2021
BOCC Award of Franchise(s)			December 2021
Resident Education and Franchise Start-up	10	December 2021	September 2022
Begin Franchise Collection Program			October 2022

Schedule Update

Type ● Certified Hauler ● Citizen ● County ● Noncertified Hauler



Type ● Certified Hauler ● Citizen ● County ● Noncertified Hauler



Meeting with Haulers

RECYCLING

- MARKET CONDITIONS

AUTOMATION

- REQUIRED?
- FULL VS PARTIAL

CARTS

LITTER CONTROL

LENGTH OF CONTRACT

- 7-10 YEARS PREFERRED

Automation

Full Automation



Partial Automation/Tipper



Recommendation: County should not control means and methods of the hauler.

Invantation to Bid

Haulers must bid all four Areas

Once a week pickup

- Trash - 64 Gallon Cart Provided
- Recycling - Single Stream Bin Provided
- Yard Waste - 2 Cubic Yards

“Rear-Door Service”

- Only for handicapped citizens as defined under Federal ADA and County Ordinance 82-108

Bulk pickups:

- Citizens to contract directly with hauler
- Alternative: Provide two bulk pickups per year

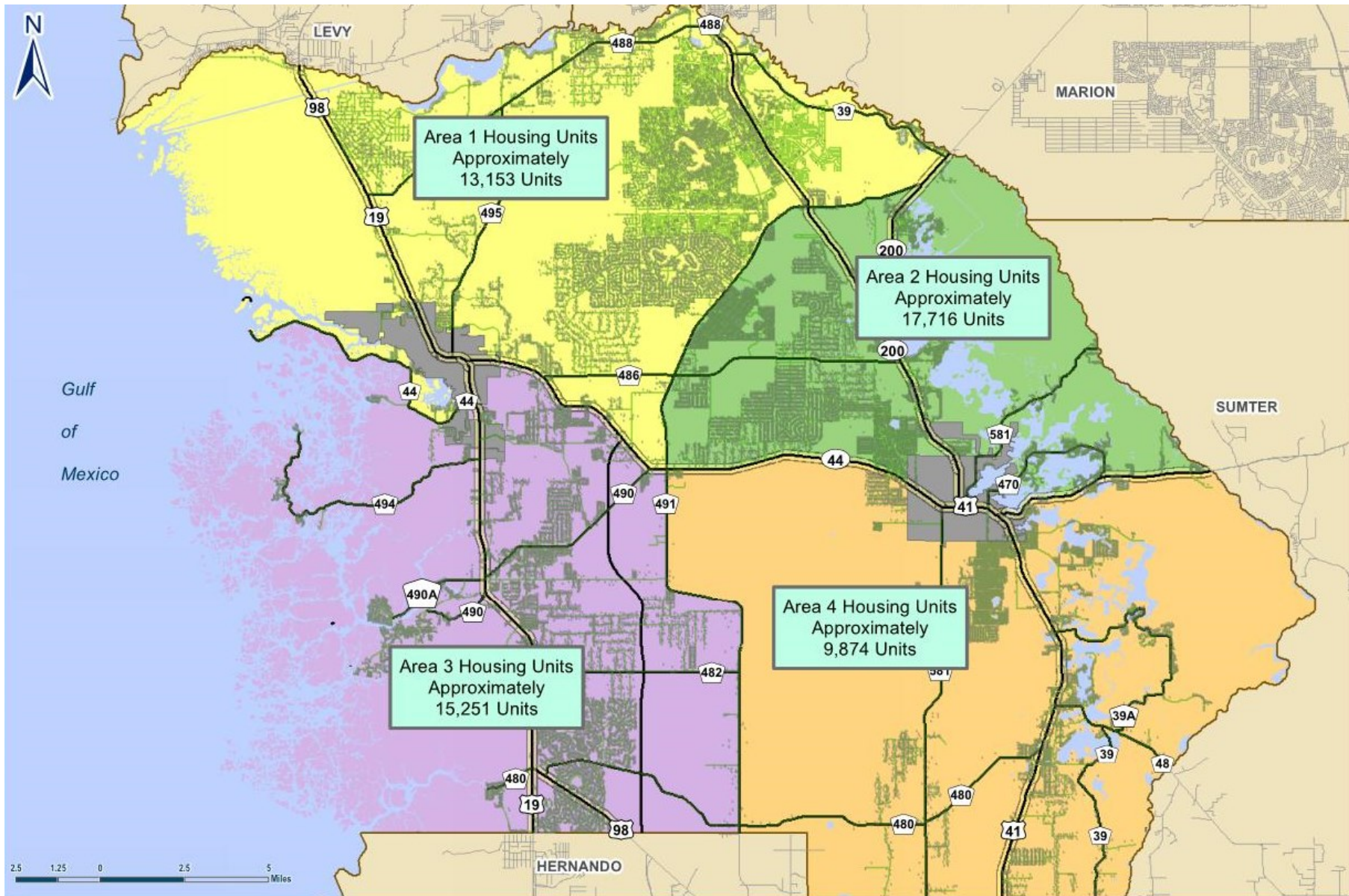
Opt-in process for pickup on non-county-maintained roads

- Hauler & County have to verify service can be performed

Haulers to provided optional bid for litter control

Price & Fuel Adjustments

- Annual CPI Adjustments
- Biannual Fuel Adjustments per the US Energy Information Administration (<https://www.eia.gov/petroleum/gasdiesel/>)



Area	Housing Units	Housing Units on County Maintained Roads	Housing Units on Non-County Maintained Roads	% Housing Units on County Maintained Roads
1	17,116	13,153	3,963	77%
2	22,998	17,716	5,282	77%
3	20,832	15,251	5,581	73%
4	11,982	9,874	2,108	82%
Total	72,928	55,994	16,934	77%